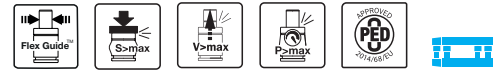


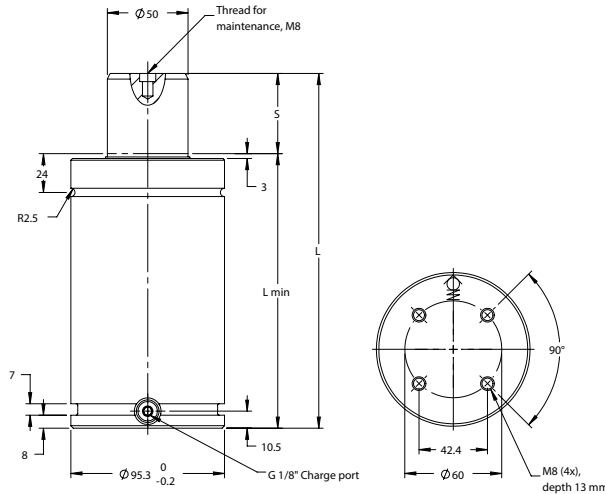


**TU-3000**  
Gasdruckfeder Standard Line



- Grün
- Blau
- Rot
- Gelb
- Schwarz

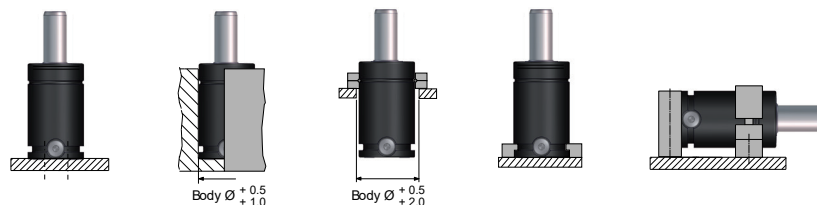
Norm: VDI 3003  
T: < 80 °C



$S = \text{Hub}$

S1	S	L ± 0.25	L min	F1 [daN]	F2 [daN]	m [kg]	V [L]	Order No.
25	25	170	145	3000	4200	6.45	0.20	TU-3000-25
38	38.1	196.2	158.1	3000	4300	6.87	0.26	TU-3000-38
50	50	220	170	3000	4400	7.25	0.32	TU-3000-50
64	63.5	247	183.5	3000	4500	7.67	0.38	TU-3000-64
80	80	280	200	3000	4600	8.20	0.46	TU-3000-80
100	100	320	220	3000	4700	8.83	0.56	TU-3000-100
125	125	370	245	3000	4700	9.63	0.69	TU-3000-125
160	160	440	280	3000	4700	10.74	0.87	TU-3000-160
175	175	470	295	3000	4800	11.20	0.95	TU-3000-175
200	200	520	320	3000	4800	12.00	1.07	TU-3000-200
225	225	570	345	3000	4800	12.80	1.20	TU-3000-225
250	250	620	370	3000	4800	13.59	1.32	TU-3000-250
300	300	720	420	3000	4800	15.18	1.57	TU-3000-300

EINBAUVARIANTEN



Druckmedium	N2
Max. Fülldruck (bei 20° C)	150 bar
Min. Fülldruck (bei 20° C)	25 bar
Betriebstemperatur	0° C - 80° C
Temperaturabhängige Druckerhöhung	0,3% / 1° C
Max. Kolbengeschwindigkeit	1,6 m/s
Empfohlene max Hübe / min (bei 20° C)	~ 15 - 40
Instandhaltungssset	3019025