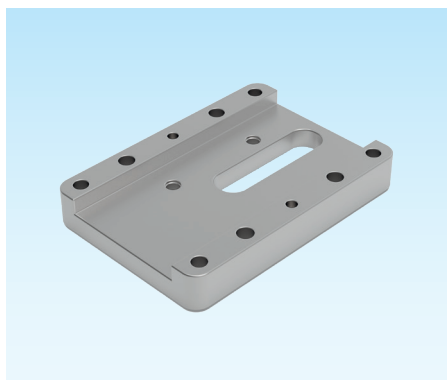


Grundplatte

Base plate

Semelle débordante



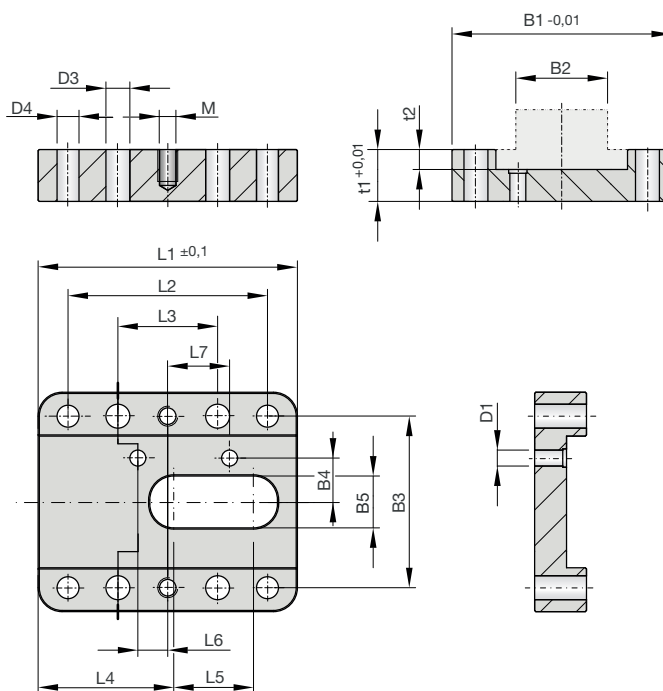
Z42020-

Mat.: 1.2842
58+2HRC

Z42020-Type



5



Type	B1	t1	L1	B2	B3	B4	B5	t2	L2	L3	L4	L5	L6	L7	D1	D3	D4	M
20-12-50	50	13	50	20	38	9.5	11	5	35	17	22	18	4	14	4	4	4.5	M4
20-12-65	50	13	65	20	38	9.5	11	5	50	25	33	22	7.5	15.5	4	6	4.5	M4
20-12-80	50	13	80	20	38	9.5	11	5	65	32	40	30	15	20	4	6	4.5	M4
20-16-50	50	13	50	20	38	9.5	11	5	35	17	22	18	4	14	4	4	5.5	M5
20-16-65	50	13	65	20	38	9.5	11	5	50	25	33	22	7.5	15.5	4	6	5.5	M5
20-16-80	50	13	80	20	38	9.5	11	5	65	32	40	30	15	20	4	6	5.5	M5
25-12-50	55	13	50	25	43	10	11	5	35	17	22	18	4	14	4	4	4.5	M4
25-12-65	55	13	65	25	43	10	11	5	50	25	33	22	7.5	15.5	4	6	4.5	M4
25-12-80	55	13	80	25	43	10	11	5	65	32	40	30	15	20	4	6	4.5	M4
25-16-50	55	13	50	25	43	10	11	5	35	17	22	18	4	14	4	4	5.5	M5
25-16-65	55	13	65	25	43	10	11	5	50	25	33	22	7.5	15.5	4	6	5.5	M5
25-16-80	55	13	80	25	43	10	11	5	65	32	40	30	15	20	4	6	5.5	M5
25-20-65	55	13	65	25	43	11	13	5	50	25	34	20	7.5	15.5	4	6	5.5	M5
25-20-80	55	13	80	25	43	11	13	5	65	32	41	28	20	20	4	6	5.5	M5
25-20-100	55	13	100	25	43	11	13	5	85	44	51	38	15	25	4	6	5.5	M5
25-25-80	55	14	80	25	43	11	13	6	65	32	41	28	20	20	4	6	5.5	M5
25-25-100	55	14	100	25	43	11	13	6	85	44	51	38	15	25	4	6	5.5	M5
32-12-50	62	13	50	32	50	11	11	5	35	17	22	18	4	14	4	4	4.5	M4
32-12-65	62	13	65	32	50	11	11	5	50	25	33	22	17.5	15.5	4	6	4.5	M4
32-12-80	62	13	80	32	50	11	11	5	65	32	40	30	20	20	4	6	4.5	M4
32-16-50	62	13	50	32	50	11	11	5	35	17	22	18	4	14	4	4	5.5	M5
32-16-65	62	13	65	32	50	11	11	5	50	25	33	22	12.5	15.5	4	6	5.5	M5

Z42020-

Type	B1	t1	L1	B2	B3	B4	B5	t2	L2	L3	L4	L5	L6	L7	D1	D3	D4	M
32-16-80	62	13	80	32	50	11	11	5	65	32	40	30	20	20	5	6	5.5	M5
32-20-65	62	13	65	32	50	11	13	5	50	25	34	20	12.5	15.5	4	6	5.5	M5
32-20-80	62	13	80	32	50	11	13	5	65	32	41	28	20	20	5	6	5.5	M5
32-20-100	62	13	100	32	50	11	13	5	85	44	51	38	15	25	5	6	5.5	M5
32-25-80	62	14	80	32	50	11	13	6	65	32	41	28	20	20	5	6	5.5	M5
32-25-100	62	14	100	32	50	11	13	6	85	44	51	38	15	25	5	6	5.5	M5
40-20-65	70	13	65	40	58	13	13	5	50	25	34	20	12.5	15.5	5	6	5.5	M5
40-20-80	70	13	80	40	58	13	13	5	65	32	41	28	20	20	5	6	5.5	M5
40-20-100	70	13	100	40	58	13	13	5	85	44	51	38	15	25	5	6	5.5	M5
40-25-80	70	14	80	40	58	13	13	6	65	32	41	28	20	20	5	6	5.5	M5
40-25-100	70	14	100	40	58	13	13	6	85	44	51	38	15	25	5	6	5.5	M5

