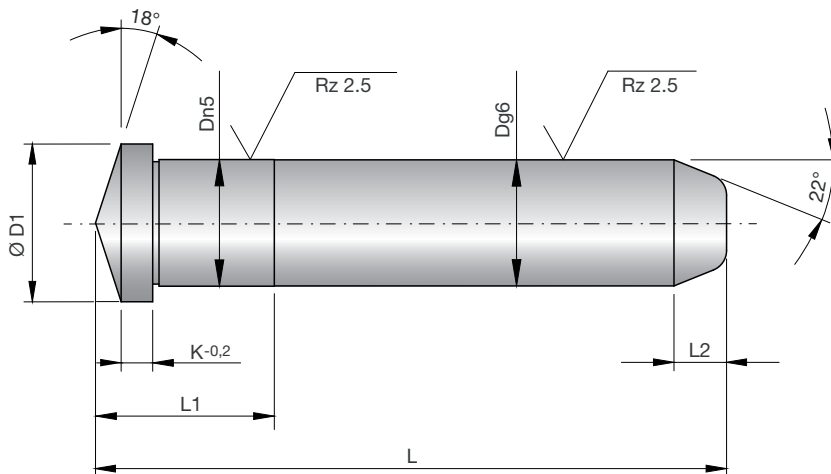
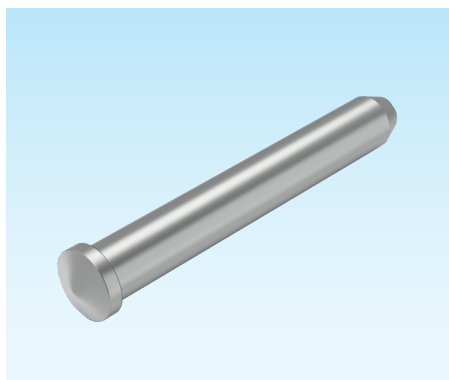


Schrägsäulen

Angle pins

Doigts incliné



Z72

Mat.: 1.7131
58+4HRC



Z72-D-L



D	L	D1	K	L1	L2	D	L	D1	K	L1	L2
10	40	12	2	13	4	16	80	19	3	22	5
	50	12	2	13	4		90	19	3	22	5
	60	12	2	13	4		100	19	3	22	5
	70	12	2	13	4		110	19	3	22	5
	80	12	2	13	4		120	19	3	22	5
	90	12	2	13	4		140	19	3	22	5
	100	12	2	13	4		160	19	3	22	5
	120	12	2	13	4		180	19	3	22	5
12	60	15	3	17	5	200	19	3	22	5	
	70	15	3	17	5	60	21	3	22	7	
	80	15	3	17	5	70	21	3	22	7	
	90	15	3	17	5	80	21	3	22	7	
	100	15	3	17	5	90	21	3	22	7	
	110	15	3	17	5	100	21	3	22	7	
	120	15	3	17	5	110	21	3	22	7	
	140	15	3	17	5	120	21	3	22	7	
14	160	15	3	17	5	140	21	3	22	7	
	60	17	3	17	5	160	21	3	22	7	
	70	17	3	17	5	180	21	3	22	7	
	80	17	3	17	5	200	21	3	22	7	
	90	17	3	17	5	220	21	3	22	7	
	100	17	3	17	5	240	21	3	22	7	
	110	17	3	17	5	80	23	4	22	7	
	120	17	3	17	5	90	23	4	22	7	
16	140	17	3	17	5	100	23	4	22	7	
	160	17	3	17	5	110	23	4	22	7	
	60	19	3	22	5	120	23	4	22	7	
	70	19	3	22	5	140	23	4	22	7	

1

D	L	D1	K	L1	L2	D	L	D1	K	L1	L2
20	160	23	4	22	7	24	120	27	4	27	7
	180	23	4	22	7		140	27	4	27	7
	200	23	4	22	7		160	27	4	27	7
	220	23	4	22	7		180	27	4	27	7
	240	23	4	22	7		200	27	4	27	7
22	60	25	4	27	7	30	220	27	4	27	7
	80	25	4	27	7		240	27	4	27	7
	100	25	4	27	7		280	27	4	27	7
	120	25	4	27	7		100	35	5	36	7
	140	25	4	27	7		120	35	5	36	7
	160	25	4	27	7		140	35	5	36	7
	180	25	4	27	7		160	35	5	36	7
24	200	25	4	27	7	180	35	5	36	7	
	220	25	4	27	7	200	35	5	36	7	
	240	25	4	27	7	220	35	5	36	7	
	80	27	4	27	7	240	35	5	36	7	
	100	27	4	27	7	280	35	5	36	7	

